

September 22, 2022

LTC COVID-19 Update

Presented by:

Lori Davenport, Director of Regulatory & Clinical Affairs
Indiana Department of Health Team



1

Today's Topics

- Popular questions of the week answered and shared – Lori and Dr. Vuppalanchi
- Important dates – October 6
- NATCEP Waiver and Leadership Conference – Suzanne Williams
- Surveyor Guidance – Comprehensive Care Plans – Lori Davenport
- Q&A

Changing the Workplace Culture by Increasing our Capacity for Empathy, a webinar on Oct. 5, details [HERE](#)

Assisted Living Symposium, an in-person event on Nov. 18, details [HERE](#)



2

Most popular question of the week!

3

Folks are asking:

- Give me the scoop on the new bivalent booster
- Reactions?
- People testing positive after getting the jab?



4

Has the definition of up to date changed?

- NHSN Updates coming September – extended current reporting until 9/25
- CDC Updates coming soon
- <https://www.cdc.gov/nhsn/pdfs/hps/covidvax/uptodateguidance-may2022-508.pdf>
- Handout



5

**IDOH – Guests
October 6th
Brenda Buroker and Tammy Alley**

6

Leadership Conference Suzanne Williams

Register here:
<https://web.cvent.com/event/7d02c9fe-2c80-47dc-ac46-da9e9064e335/summary>

7

NATCEP Waiver Update

- IDOH submitted statewide NATCEP waiver
- Thank you to everyone that submitted data that was included in the request.
- Supplement field testers
- Suzanne Williams – SuWilliams@isdh.in.gov



8

Qsource – Escape Room Update

- Kara Dawson remains on medical leave
- Technical finishes to the Escape Room are in the works!
- Several providers reached out asking if resources could be made available on an app – ask and you shall receive!
- A phone app where resources can be at your fingertips.
- Teresa, Angeleta, and Candace – Reach out if you have needs.
- Mitzi Daffron thanks all who have reached out to check on Kara.



9

**Phase 2 Guidance Phase 3 New Guidance
§483.21(b)(3) Comprehensive Care Plans**

10

Historical Regulatory Deficiencies with Comprehensive Care Plans

- Interventions
- Resident Status Changes
- Person-Centered – preferences and measurable – QOC accidents, skin and or pain



11

Root Causes

- Staff do not know what they are to do or do not have the information they need to care for the resident.
- Staff do not know where or how to access the care plan or updates and are not effectively shared with them.
- Staff do not realize the impact of what they are or are not doing.
- Staff know what they are supposed to do but are inconsistent.
- Communication related to care plan goals across teams are not established or are not effective.
- Information flow within and between shifts and team can be improved.



12

F656 – Overview

- Added requirement:

A facility must ensure that each resident's person-centered comprehensive care plan includes approaches that address the resident's cultural preferences and reflects trauma-informed care when appropriate.



13

F656 – Culturally Competent and/or Trauma Informed

- The resident's care plan includes a description of the resident's cultural preferences, values and practices, includes approached to meet the resident's cultural needs and preferences, and for residents with a history of trauma, the care plan describes interventions accounting for the experiences and preferences to eliminate or mitigate triggers that may cause trauma.



14

Collaboration

- Family
- Survivors
- Health care professionals



15

Important

- Seek understanding related to triggers and develop interventions.
- Understand cultural preferences and the impact of care.
 - Related tags:
 - F699 – concerns related to outcomes or potential outcomes to the resident – culturally competent and/or trauma-informed care
 - F726 – Concerns related to knowledge competencies or skills of nursing staff to provide care (CC and or TIC)
 - F742 – Concerns related to treatment and or services (CC and or TC)



16

Recommended Actions:

- Provide staff with education on cultural needs and preferences – communication, food, clothing, care, cultural etiquette
- Review or develop policy and/or process to address trauma and cultural preferences.
- Evaluate how to determine triggers which can cause trauma and how you will develop interventions.
- Evaluate process of collaboration.
- Evaluate access to services and or treatments for appropriateness.



17



Q&A

IHCA.ORG

18

Contact Information

- Lori Davenport – IHCA/INCAL Clinical/Regulatory
 - ldavenport@ihca.org
 - 765-516-0148
- Amy Kent – Assistant Commissioner, IDH
 - amkent1@isdh.in.gov
 - 317-233-7289
- Jennifer Spivey – Infection Control, IDH
 - JSpivey1@isdh.IN.gov
 - 317-232-0639
 - 317-471-7844 cell
- Paul Krievins
 - pkrievins@isdh.in.gov
- Kelly White – Reporting, IDH
 - kewwhite@isdh.in.gov
- Tammy Alley – Vaccine Questions, IDH
 - talley@isdh.in.gov
 - 317-223-7441
- Randy Synder – Vaccine Questions, IDH
 - rsnyder1@isdh.in.gov
- Russell Evans
 - russ@probarisystems.com
 - outreach@probarisystems.com
 - 317-804-4102
- Paul Peaper – IHCA/INCAL President
 - ppeaper@ihca.org
- Dr. Shireesha Vuppalanchi – Clinical, IDH
 - svuppalanchi@isdh.in.gov
- Brenda Buroker – Survey, IDH
 - bburoker@isdh.in.gov
 - 317-234-7340
- Jan Kulik
 - jkulik@isdh.in.gov
 - 317-233-7480
- Peter Krombach
 - pkrombach2@isdh.in.gov
- Michelle Donner
 - midonner@isdh.in.gov
- Pam Pontones – CDC Guidance, IDH
 - ppontones@isdh.IN.gov
 - 317-233-8400
- Kara Dawson – NHSN
 - kdawson@qsource.org
 - 317-628-1145 OR contact:
 - Angeleta Hendrickson - ahendrickson@qsource.org
 - Teresa Hostettler - thostettler@qsource.org
- Deeksha Kapoor – IHCA/INCAL Communications/PR
 - dkapoor@ihca.org
- Rob Jones – IDH Gateway Assistance
 - rjones@isdh.in.gov
- David McCormick
 - DMcCormick@isdh.IN.gov
- Dr. Lindsey Weaver
 - lweaver@isdh.in.gov
- Langham Customer Service
 - 866-926-3420
 - Covidsupport@elangham.com
- Deanna Paddack – Infection Prevention, IDH
 - dpaddack@isdh.in.gov
 - 317-464-7710
- Dave McCormick – Immunization Division, IDH
 - DMcCormick@isdh.IN.gov



19



THANK YOU!

IHCA.ORG

20

COVID-19 Vaccination Modules: Key Terms



COVID-19 Vaccination Modules: Understanding Key Terms and Up to Date Vaccination

This document defines key terms related to COVID-19 vaccination for the purpose of NHSN public health surveillance. Facilities can review these definitions when reporting data through the NHSN COVID-19 Vaccination Modules.

This document will be updated to reflect any changes as COVID-19 vaccination guidance evolves (for example, revisions to CDC’s *up to date* vaccination definition). This document will be updated quarterly. Use the definitions for the reporting period associated with the reporting weeks included in your data submission.

Contents

| | |
|--|---|
| COVID-19 Vaccination Modules: Understanding Key Terms and Up to Date Vaccination | 1 |
| Reporting Period Quarter 3 2022 (June 27, 2022 – September 25, 2022)..... | 2 |
| Reporting Period Quarter 2 2022 (May 30, 2022 – June 26, 2022)..... | 5 |
| Appendix: Decision Tree for Determining Up to Date Vaccination Status..... | 7 |



COVID-19 Vaccination Modules: Key Terms



Reporting Period Quarter 3 2022 (June 27, 2022 – September 25, 2022)

The following definitions apply when reporting data through the NHSN COVID-19 Vaccination Modules for the reporting period of Quarter 3, 2022 (representing vaccination data for June 27, 2022 – September 25, 2022).

Up to date with COVID-19 vaccines (Please note that changes for Quarter 3 2022 are highlighted in yellow.)

| Individuals are considered up to date with their COVID-19 vaccines during the surveillance period of June 27, 2022 through September 25, 2022 for the purpose of NHSN surveillance if they meet (1) of the following criteria*: | |
|--|---|
| If Under 50 Years: | If 50 Years and Older: |
| <p>Received at least one booster dose</p> <p style="text-align: center;"><u>or</u></p> <p>Recently received all recommended doses in the primary vaccine series but is not yet eligible for a booster dose. This includes:</p> <ul style="list-style-type: none"> a) Those who completed their 2-dose primary series of an mRNA COVID-19 vaccine (Pfizer-BioNTech or Moderna) less than 5 months ago. b) Those who received a single dose of Janssen less than two months ago. | <p>Received second booster dose (<u>or</u> received first booster dose less than 4 months ago and not yet eligible for a second booster dose)</p> <p style="text-align: center;"><u>or</u></p> <p>Recently received all recommended doses in the primary vaccine series** but is not yet eligible for a booster dose. This includes:</p> <ul style="list-style-type: none"> a) Those who completed their 2-dose primary series of an mRNA COVID-19 vaccine (Pfizer-BioNTech or Moderna) less than 5 months ago. b) Those who received a single dose of Janssen less than two months ago. |

*Individuals with a moderately to severely immunocompromising condition are considered up to date in the following cases:

- 1) Received an additional dose less than three months ago, if primary series was the Moderna or Pfizer-BioNTech COVID-19 vaccine; or
- 2) Received an additional dose less than two months ago, if primary series was the Janssen COVID-19 vaccine; or
- 3) Received an additional dose and one booster dose **less than four months ago; or**
- 4) Received a **second booster dose**.

**The Novavax COVID-19 Vaccine was approved by the FDA on July 13, 2022. The Novavax COVID-19 Vaccine, Adjuvanted is administered as a two-dose primary series. Individuals who complete the Novavax primary series are considered up to date two weeks after the final dose in their primary series, since a booster dose is not recommended at this time for anyone who has completed the Novavax primary series.

Primary vaccine series

Completing a primary vaccine series means receiving:

- A 2-dose series of a COVID-19 vaccine **OR**
- A single dose of Janssen COVID-19 vaccine

COVID-19 Vaccination Modules: Key Terms



Booster dose

A booster dose is a subsequent dose of vaccine administered to enhance or restore protection which might have waned over time after primary series vaccination.

Additional dose

An additional dose is another dose of vaccine administered to people who were less likely to mount a protective immune response after initial vaccination (i.e., those who are moderately or severely immunocompromised).

*Note: Assume all doses received after primary series are booster doses unless you have specific documentation of an individual receiving an additional dose.

Examples: Up to Date with COVID-19 Vaccines

| Examples | Considered up to date? |
|---|---|
| <ul style="list-style-type: none"> Mary is 35 years old. Mary received 2 doses of the Moderna COVID-19 vaccine. Mary received one booster dose of the Moderna COVID-19 vaccine 2 months ago. | Yes, Mary is up to date with COVID-19 vaccines because she is less than 50 years old and received one booster dose. |
| <ul style="list-style-type: none"> Tom is 60 years old. Tom received 2 doses of the Pfizer COVID-19 vaccine. Tom received one booster dose of the Moderna COVID-19 vaccine 4.5 months ago. | No, Tom is not up to date with COVID-19 vaccines because he is 60 years old (i.e., greater than 50) and received only one booster dose 4.5 months ago. Since it has been more than 4 months since his booster dose, Tom is now eligible for a second booster dose but has not yet received it. |
| <ul style="list-style-type: none"> Jackie is 78 years old. Jackie received 2 doses of the Moderna COVID-19 vaccine. Jackie received two booster doses of the Moderna COVID-19 vaccine; last dose was 7 months ago. | Yes, Jackie is up to date with COVID-19 vaccines because she received two booster doses. |
| <ul style="list-style-type: none"> John is 23 years old. John received 2 doses of the Moderna COVID-19 vaccine; last dose was 7 months ago. | No, John is not up to date with COVID-19 vaccines because he has not received a booster dose even though he is eligible for it. It has been over 5 months since John received his second dose of the Moderna COVID-19 vaccine. Therefore, John is eligible for a booster dose. He has not yet received a booster dose, so he is not up to date. |

COVID-19 Vaccination Modules: Key Terms



| | |
|---|---|
| <ul style="list-style-type: none"> • Frank is 70 years old. • Frank received 2 doses of the Pfizer-BioNTech COVID-19 vaccine; last dose was 3 months ago. | <p>Yes, Frank is up to date with COVID-19 vaccines. It has been three months since Frank received his second dose of the Pfizer-BioNTech COVID-19 vaccine. Therefore, Frank is not yet eligible for a booster dose at this time (but will be eligible in two months).</p> |
| <ul style="list-style-type: none"> • Jane is 19 years old. • Jane only received the first dose of the Pfizer-BioNTech COVID-19 vaccine. | <p>No, Jane is not up to date with COVID-19 vaccines because she did not receive all recommended doses in the primary vaccine series.</p> |
| <ul style="list-style-type: none"> • Alice received 2 doses of the Moderna COVID-19 vaccine. • Alice received an additional dose one month ago due to having a moderately immunocompromising condition. • Alice did not receive any booster doses. | <p>Yes, Alice is up to date with COVID-19 vaccines because she received an additional dose less than three months ago. Therefore, Alice is not yet eligible for a booster dose at this time (but will be eligible in two months).</p> |



COVID-19 Vaccination Modules: Key Terms



Reporting Period Quarter 2 2022 (May 30, 2022 – June 26, 2022)

The following definitions apply when reporting data through the NHSN COVID-19 Vaccination Modules for the reporting periods of Quarter 2, 2022 (representing vaccination data for May 30, 2022 through June 26, 2022).

Primary vaccine series

Completing a primary vaccine series means receiving:

- A 2-dose series of an mRNA COVID-19 vaccine (Pfizer-BioNTech and Moderna), **OR**
- A single dose of Janssen COVID-19 vaccine

Booster dose

A booster dose is a subsequent dose of vaccine administered to enhance or restore protection which might have waned over time after primary series vaccination.

Additional dose

An additional dose is another dose of vaccine administered to people who were less likely to mount a protective immune response after initial vaccination (i.e., those who are moderately or severely immunocompromised).

*Note: Assume all doses received after primary series are booster doses unless you have specific documentation of an individual receiving an additional dose.

Up to date with COVID-19 Vaccines

Individuals are considered up to date with their COVID-19 vaccines during the surveillance period of May 30, 2022 through June 26, 2022 for the purpose of NHSN surveillance if they meet (1) of the following criteria*:

1. An individual received all recommended doses in their **primary vaccine series** and received at least **one booster dose**. An individual does not need to receive a second booster dose to be considered up to date at this time.
2. An individual **recently** received all recommended doses in the **primary vaccine series** and is **not yet eligible for a booster dose**. Individuals who are not yet eligible to receive a booster dose include:
 - a. Those who received their second dose of a 2-dose primary series of an mRNA COVID-19 vaccine (Pfizer-BioNTech or Moderna) less than 5 months ago.
 - b. Those who received a single dose of Janssen less than two months ago.

*Individuals with a moderately to severely immunocompromising condition are considered up to date in the following cases:

- 1) An individual received an additional dose less than three months ago, if primary series was the Moderna or Pfizer-BioNTech COVID-19 vaccine; or
- 2) An individual received an additional dose less than two months ago, if primary series was the Janssen COVID-19 vaccine; or
- 3) An individual received at least one booster dose after receiving an additional dose.



COVID-19 Vaccination Modules: Key Terms



Examples: Up to Date with COVID-19 Vaccines

| Examples | Considered up to date? |
|---|---|
| <ul style="list-style-type: none"> Mary received 2 doses of the Moderna COVID-19 vaccine. Mary received one booster dose of the Moderna COVID-19 vaccine 2 months ago. | Yes, Mary is up to date with COVID-19 vaccines because she received one booster doses |
| <ul style="list-style-type: none"> Jackie received 2 doses of the Moderna COVID-19 vaccine. Jackie received two booster doses of the Moderna COVID-19 vaccine; last dose was 7 months ago. | Yes, Jackie is up to date with COVID-19 vaccines because she received one booster dose. (In this case, she received two booster doses.) |
| <ul style="list-style-type: none"> John received 2 doses of the Moderna COVID-19 vaccine; last dose was 7 months ago. | No, John is not up to date with COVID-19 vaccines because he has not received a booster dose even though he is eligible for it. It has been over 5 months since John received his second dose of the Moderna COVID-19 vaccine. Therefore, John is eligible for a booster dose. He has not yet received a booster dose, so he is not up to date. |
| <ul style="list-style-type: none"> Tom received 2 doses of the Pfizer-BioNTech COVID-19 vaccine; last dose was 3 months ago. | Yes, Tom is up to date with COVID-19 vaccines. It has been three months since Tom received his second dose of the Pfizer-BioNTech COVID-19 vaccine. Therefore, Tom is not yet eligible for a booster dose at this time (but will be eligible in two months). |
| <ul style="list-style-type: none"> Jane only received the first dose of the Pfizer-BioNTech COVID-19 vaccine. | No, Jane is not up to date with COVID-19 vaccines because she did not receive all recommended doses in the primary vaccine series. |
| <ul style="list-style-type: none"> Matt received 2 doses of the Moderna COVID-19 vaccine. Matt received an additional dose due to having a severely immunocompromising condition. Matt received one booster dose after the additional dose. | Yes, Matt is up to date with COVID-19 vaccines because he received a booster dose after the additional dose of his primary series for his immunocompromising condition. |
| <ul style="list-style-type: none"> Alice received 2 doses of the Moderna COVID-19 vaccine. Alice received an additional dose one month ago due to having a moderately immunocompromising condition. Alice did not receive any booster doses. | Yes, Alice is up to date with COVID-19 vaccines because she received an additional dose less than three months ago. Therefore, Alice is not eligible for a booster dose at this time (but will be eligible in two months). |

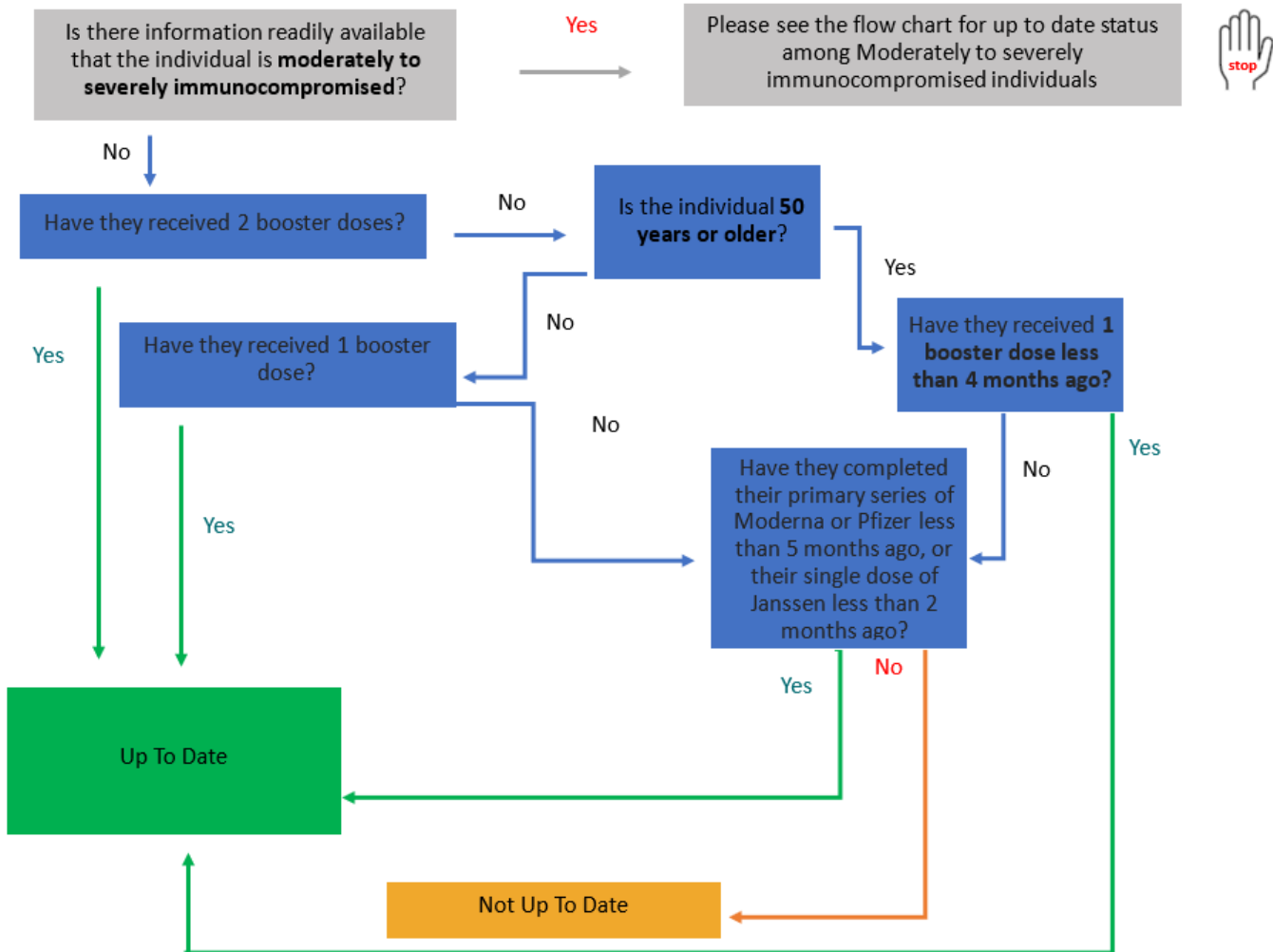


COVID-19 Vaccination Modules: Key Terms



Appendix 1: Decision Tree on Determining Up to Date Vaccination Status for Reporting Period Quarter 3 2022 (June 27, 2022 – September 25, 2022)

Facilities can use the following decision tree to help determine up to date vaccination status. Please note this refers to reporting data through the NHSN COVID-19 Vaccination Modules for the reporting period of Quarter 3, 2022 (representing vaccination data for June 27, 2022 through September 25, 2022).



COVID-19 Vaccination Modules: Key Terms



Appendix 2: Decision Tree on Determining Up to Date Vaccination Status for moderately to severely immunocompromised individuals for Reporting Period Quarter 3 2022 (June 27, 2022 – September 25, 2022)

Facilities can use the following decision tree to help determine up to date vaccination status. Please note this refers to reporting data through the NHSN COVID-19 Vaccination Modules for the reporting period of Quarter 3, 2022 (representing vaccination data for June 27, 2022 through September 25, 2022)

